

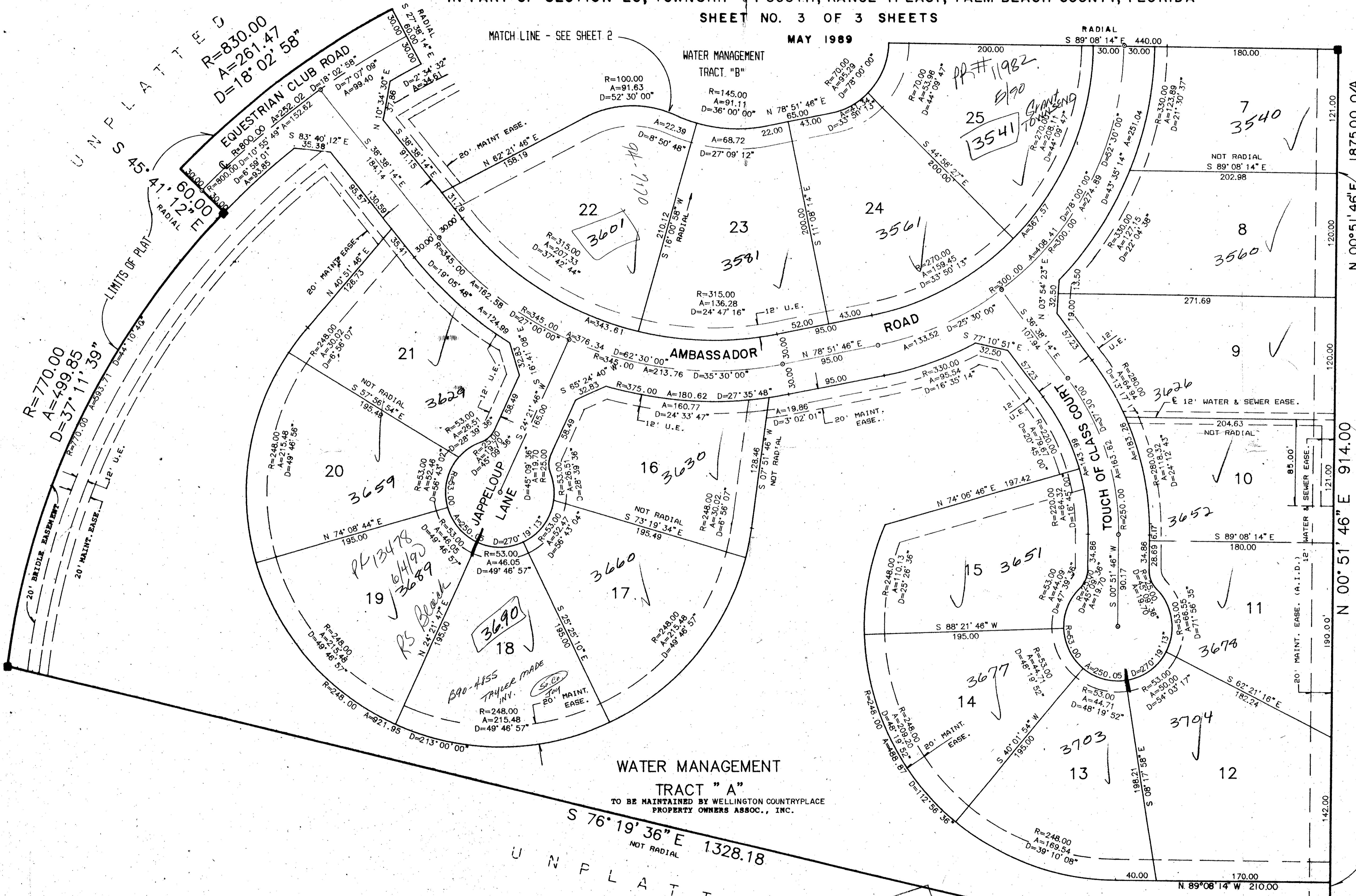
EQUESTRIAN CLUB ESTATES - PLAT NO. 1 OF PALM BEACH POLO AND COUNTRY CLUB WELLINGTON COUNTRYPLACE - P.U.D.

IN PART OF SECTION 20, TOWNSHIP 44 SOUTH, RANGE 41 EAST, PALM BEACH COUNTY, FLORIDA
SHEET NO. 3 OF 3 SHEETS

0333-006

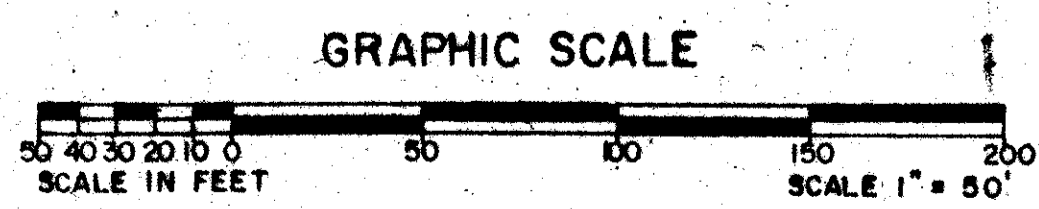
189

MAY 1989



T&Z 728

EQUESTRIAN CLUB ESTATES - PLAT NO. 1 OF PALM BEACH POLO AND COUNTRY CLUB
SUBDIVISION → NO. 1 OF PALM BEACH POLO
BOOK L41 PAGE 189
FLOOD ZONE AO (I) FLOOD MAP → 1000G
QUAD → 78 ZONING → LE
SE 76-60 ZIP CODE 33414
PUD NAME WELLINGTON COUNTRYPLACE P.U.D.



WATER MANAGEMENT TRACT "A"
TO BE MAINTAINED BY WELLINGTON COUNTRYPLACE PROPERTY OWNERS ASSOC., INC.

ADD. BY b.i.
CHECKED BY [Signature]

64/189

0333-006

SCALE: 1" = 50'	NICK MILLER, INC. Land Surveying	DRAWN BY:
DATE: MAY 1989	Planning & Development Consultants	CHK
EQUESTRIAN CLUB ESTATES - PLAT NO. 1 OF PALM BEACH POLO & COUNTRY CLUB WELLINGTON COUNTRYPLACE - P.U.D.		
2560 RCA Blvd. • Suite 100 Palm Beach Gardens, Florida 33410 • 561-732-5200		DRAWING NUMBER 880631B

NOTE: LOT LINES ARE RADIAL UNLESS OTHERWISE NOTED.